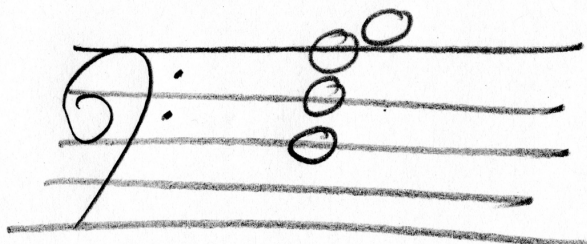


E $\flat$ 7  
(E $\flat$  G B $\flat$  D $\flat$ )

$\text{E}\flat$  F G A B $\flat$  C D $\flat$  E $\flat$

1 1 1 1 1 1 1 1  
1 2 3 4 1 2 3 4



Dm6  
(D F A B)

D E F G A B C D

1 1 1 1 1 1 1 1  
1 2 3 4 1 2 3 4